

Revision Control No: **TLS-1**

## Theater Line Set System Specification Sheet

**Product Name**  
**Model Number**

**Theater Line Set System**  
**TS1000 and PS500**

### System Description

The system is built up using one TS1000 Motor and one or more PS500 PosiSpool units to provide lift lines at intervals of up to 12 feet span. Each lift line may carry a maximum of 500 lbs., but the maximum total load allowable is 1,000 lbs.

Both the TS1000 Motor and the PS500 Posispools mount to an MK1 Mounting Plate kit.

Interconnecting Drive Shafts are field-prepared (drilling only required) and are readily mounted using part no PS500C Couplings

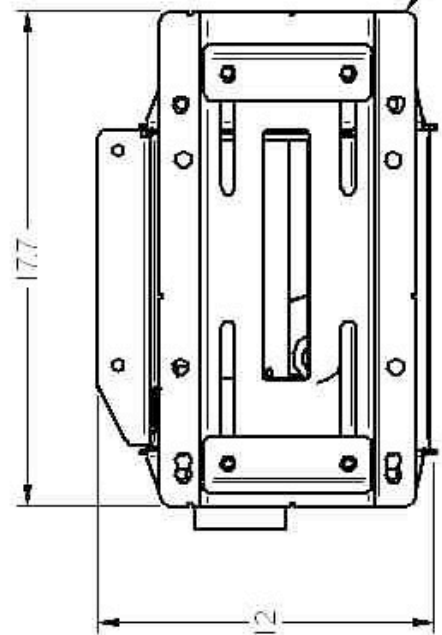
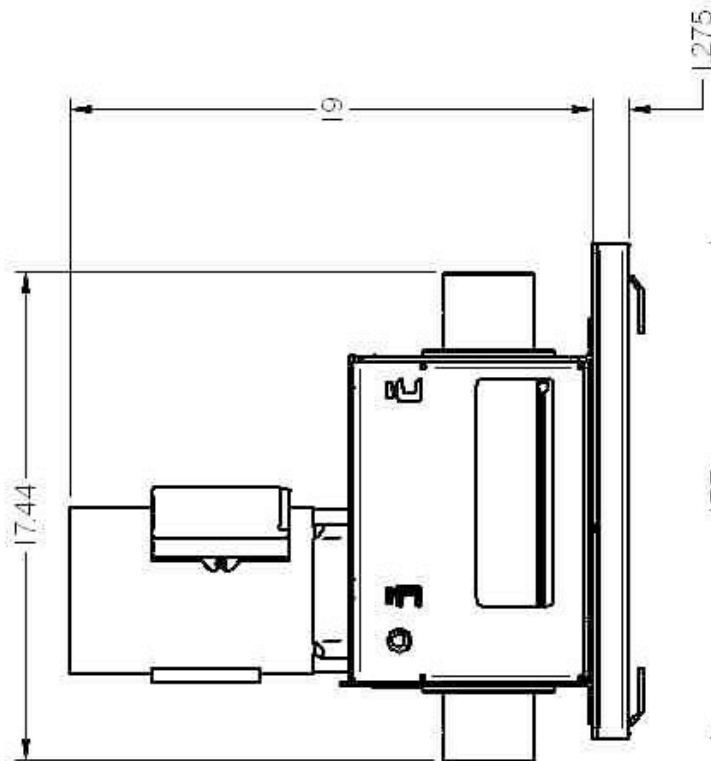
### Specifications

Safe Working Load	1,000 lbs. Divided between the TS1000 Motor and at least one PS500 PosiSpool
Load type	Vertical lifting of Lighting Pipes and other infrequently lowered units
Rope type	1/4" 7 x 19 aircraft cable.
Rope Travel	25 feet
Electrical Characteristics	110 Volts, 60 cycle. Is standard, 220 volts single phase on request
Motor	1 HP
Full Load Amperage	13.2 amps.
Motor Type	Single phase, Instant reverse, low maximum current draw design
Duty Cycle	10 minutes on, 20 minutes off.
Gear Reduction	Proprietary composite self lubricating gearing with no oil bath.
Rope Drums	Grooved for accurate winding. Supported in large diameter ball bearings and with positive, through the drum type rope anchoring.
Braking on TS1000 Motor	Double, self-locking worm gearing plus passive uni-directional brake.
Braking on PS500 PosiSpool	Over-Speed brake engages immediately to arrest a runaway load.
Pressure Rollers	Constant pressure type with torsion spring mounting.
Limit Switches on TS1000	Heavy duty upper and lower switches,
Frame Construction	Interlocking steel frame for high rigidity and precise alignment.
Weight TS1000 Motor	55 lbs.
Weight PS500 PosiSpool	38 lbs.

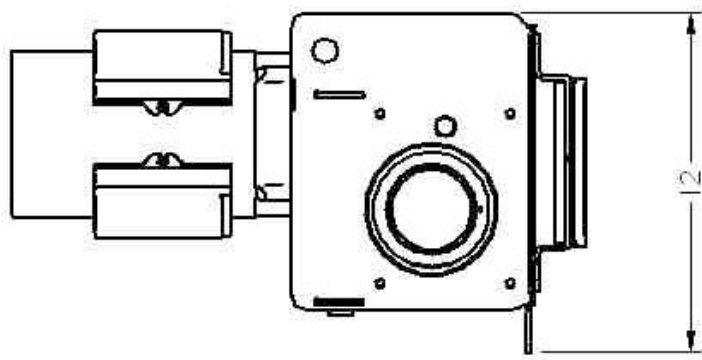
### Other related documents

Outline Drawing TS1000	TS1000-01
Wiring Diagram No.	TS1000-WD
Outline Drawing PS500	PS500-01

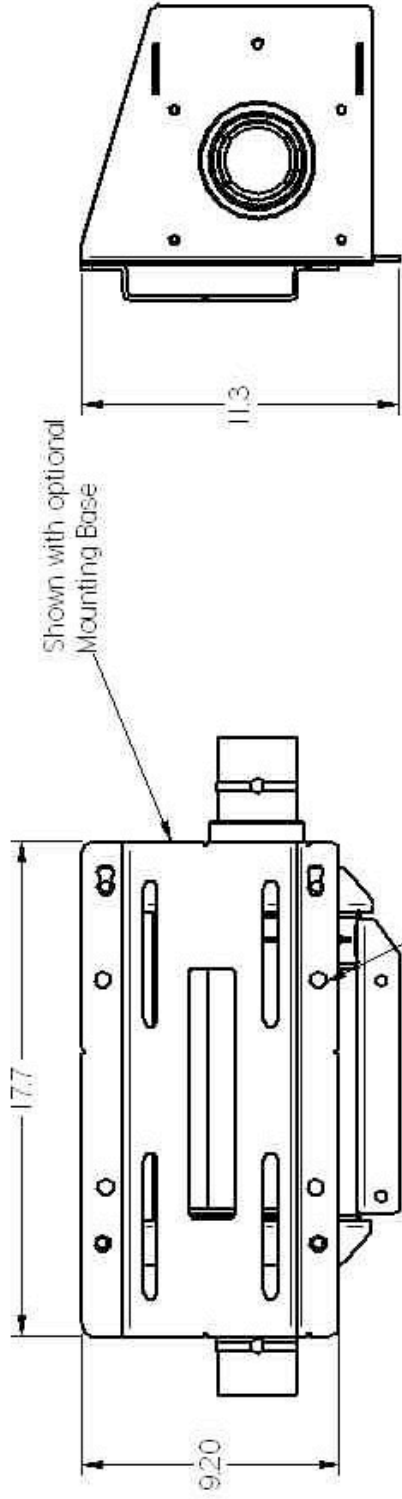
*Specifications subject to change without notice.*



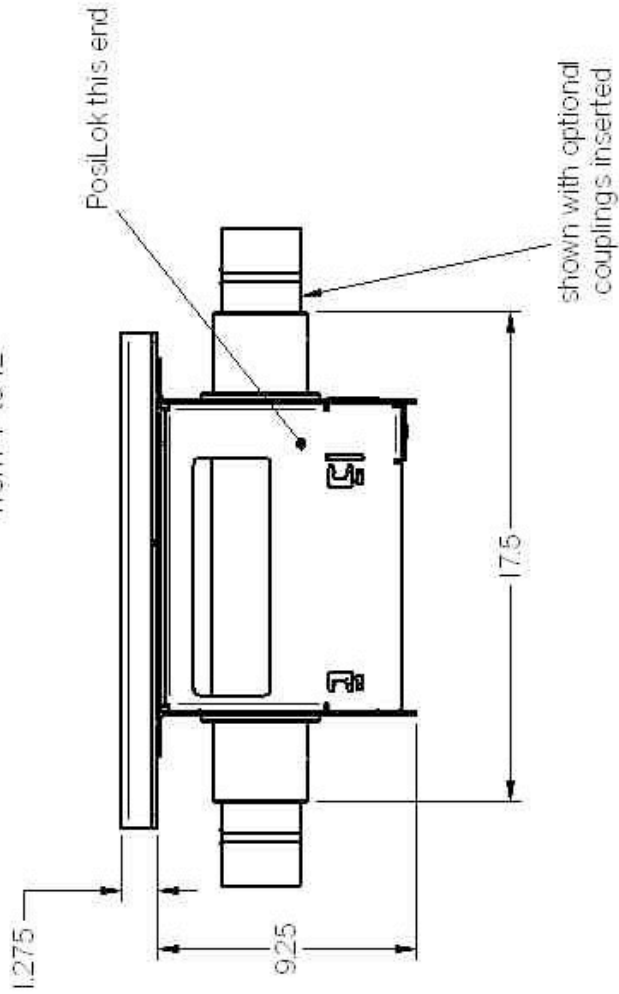
Shown with optional  
Mounting Base



<b>TORK WINCH INC.</b>	
<i>TS1000 Winch Motor</i>	
Mar 27/05	<b>500MK Mounting Kit</b>



clamps (not shown) adjustable from 4' to 12'



TORK WINCH INC.

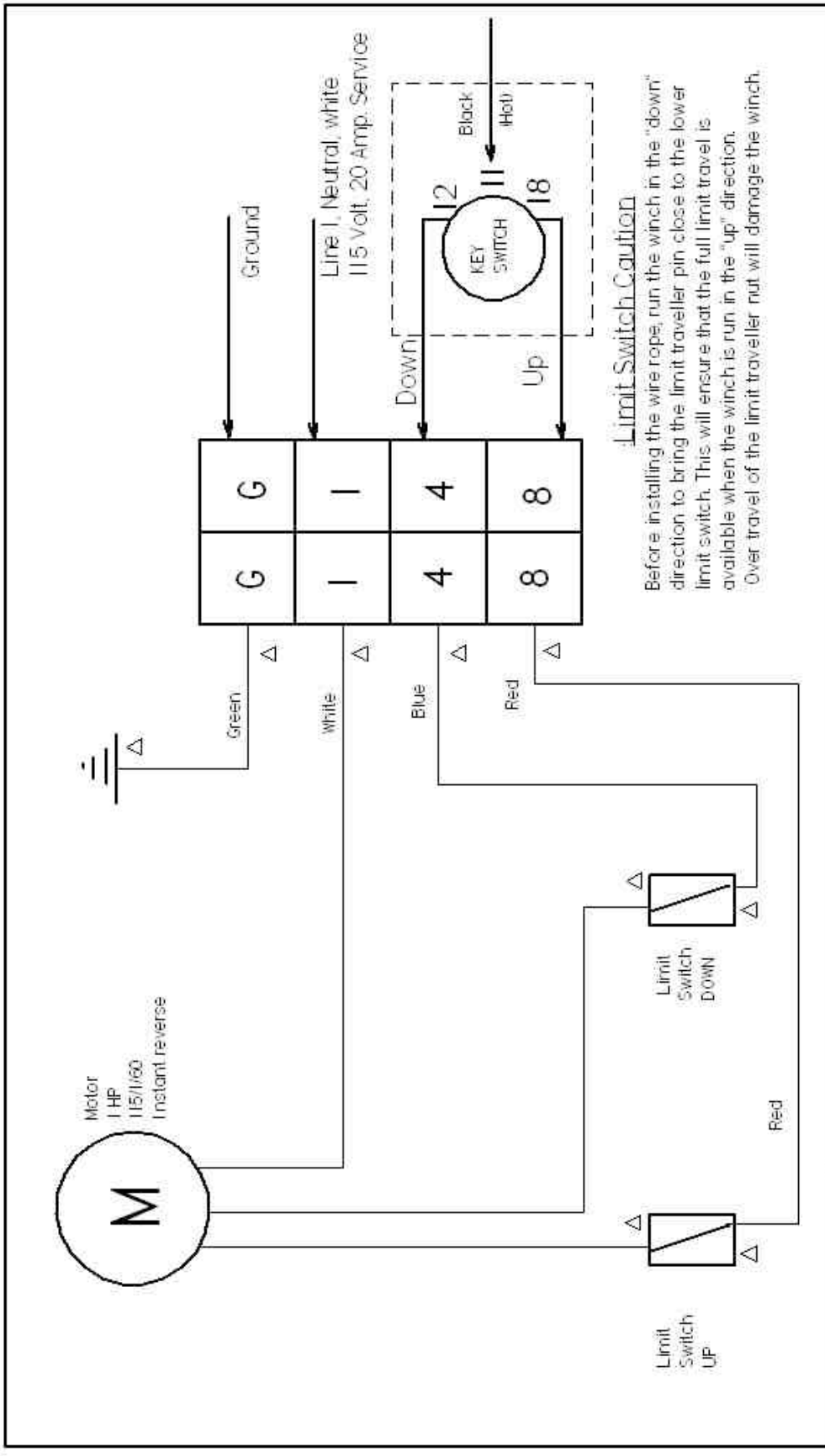
PS500 PosiSpool

500PC Pipe Couplings

500MK Mounting Kit

Mar 27/05





**Limit Switch Caution**

Before installing the wire rope, run the winch in the "down" direction to bring the limit traveller pin close to the lower limit switch. This will ensure that the full limit travel is available when the winch is run in the "up" direction. Over travel of the limit traveller nut will damage the winch.

<p><b>Specification</b></p> <p>20amp 1 HP 115/1/60</p>	<p><b>Legend</b></p> <p>← Customer Wiring use No. 12/3 wire</p> <p>△ Factory Wiring</p>	<p>The user is responsible for ensuring that all wiring meets local code and safety standards.</p> <p>March 27, 05</p>	<p><b>TORK WINCH INC.</b></p> <p><b>TS1000 WIRING DIAGRAM</b></p>	<p>DRAWING</p>	<p>TS1000-WD</p>
--	---	--	---	----------------	------------------